

Website:

<https://sdsupsichi.wixsite.com/sdsupsichi>

Email:

psych.sdsu@gmail.com

Instagram:

[@sdsupsichi](https://www.instagram.com/sdsupsichi)

Facebook:

[Psi Chi Psych Club](#)

Psychology Club & Psi Chi

April 5, 2023



← Scan to sign in

Join our GroupMe →



Eat to **support** Psi Chi / Psychology Club

Wednesday, April 12th | 11:00 AM - 9:00 PM

Smashburger

6061 El Cajon Blvd.

RSVP: grouprai.se/f248060



Cords for Graduating Seniors!

- If you are graduating this semester and think you are **eligible for a cord** for either Psi Chi, Psych Club, or both
 - **Please fill out the google form!**
- You **are eligible** if you have been **active for 2 semesters**.
- **If you are not eligible**, you are still able to purchase a cord for **12 dollars**.



YMCA EMPLOYER WORKSHOP



YMCA expanded learning program is hiring!
Are you a fun and energetic leader who is passionate about working
with youth and building your professional skills? Come sign up for
this exciting workshop!



WED., APRIL 19



12:00 PM - 2:00 PM



CAREER SERVICES, SSE 1200

**SCAN TO
REGISTER ON
HANDSHAKE:**



Mental health is about community.

One of the ways you can help your community is by signing up to become a volunteer Crisis Counselor.

Learn more at
crisistextline.org/volunteer

Free, 24/7 support for people in crisis.

CRISIS TEXT LINE |

CRISIS TEXT LINE |

Whether it's your friends,
family, or community,
everyone needs
someone to lean on.




If you don't know where to turn,
you can text **HOME** to **741741**.

A volunteer Crisis Counselor with
Crisis Text Line will be there for you.
It's free and 24/7.

- Volunteer opportunity!
- Hours are flexible, remote, and look great on grad school applications!
- Email khelmke@crisistextline.org with any questions



Psychology Club Applications

- **Anyone can join!** You do not have to be a Psychology major or minor
 - Applications can be downloaded off of our website
(<https://sdsupsichi.wixsite.com/sdsupsichi>)
 - Email applications to **psych.sdsu@gmail.com**, or turn in a paper copy
 - There is a **one-time membership fee of \$20**
 - Pay to our Venmo **@Julie-Kersey**, or pay cash in person
 - Must be paid at the time that you give us your application to process it
 - **DO NOT mark payment as a “good or service”**
- 

Officer Elections!



General Officer Requirements

- Must attend weekly officer meetings
- Must attend weekly General Body Meetings
- Maintain active member status
- Attend and participate in any Psychology Club/ Psi Chi hosted events
- Play an active part of an awesome executive board! :)
- **To run for board:**
 - **One semester active** for Secretary, CSSC Representative, Lecture Coordinator, & Points Publicist
 - **Two semesters active** for President, Vice President, & Treasurer
 - **Active member of Psi Chi** for Psi Chi Vice President & President

Election Day

- Fill out the google form that will be sent out & posted at the end of these slides to indicate that you plan to run for an officer position. This form is due **by April 16th.**
- Elections will be held on **April 19th** from **4-5pm** on **Zoom!**
- You will present a **two-minute speech** for your officer position
 - Everyone will direct message their vote to Kassidy & Nicolette
 - We will know who won in **live time.**
- If you don't get that officer position, you **can** run again for the next position.

Points Publicist

- ❑ Keep track of and log member points on a weekly basis
- ❑ Create google sign in forms weekly for the general body meetings
- ❑ Create google forms for other events as needed
- ❑ Email members when they achieve active status and are close to active status every semester
- ❑ Note active members and how many semesters they are active in the club's records

Contact Kelsey at kkeuning2283@sdsu.edu with any questions!



Lecture Coordinator

- ❑ In charge of seeking fundraising, social, academic, or service opportunities for Psi Chi and Psychology Club
- ❑ **Schedule academic speakers and communicate information to them**
- ❑ Minimum of 3 hour commitment during the school week (office meeting, general meeting, office hour)
- ❑ Help apply for Psi Chi awards if the group chooses to apply for any

Contact Megan at mkorhummel2027@sdsu.edu with any questions!



Psi Chi/Psychology Club CSSC Representatives (2)

- ❑ Attend College of Sciences Student Council Meetings on Wednesday from 1:00pm-2:00pm
- ❑ Must attend respective meeting times to remain active in the Council
- ❑ Deliver financial presentations for reimbursements as needed for the organization
- ❑ Act as the liaison between members and the council

Contact Shelbie at snelson7289@sdsu.edu
or Jane at jgriffin8552@sdsu.edu with any questions!



Secretary

- ❑ In charge of all things communication!
- ❑ Send out weekly newsletters to members
- ❑ Update social media & website weekly
- ❑ Post journal posts every Sunday
- ❑ Create and promote flyers
- ❑ Collaborate + Communicate with officers
- ❑ Respond and communicate on social media (DM's, comments, etc.)
- ❑ Minimum 3 hour commitment during the school week (officer meeting, general meeting, office hours)

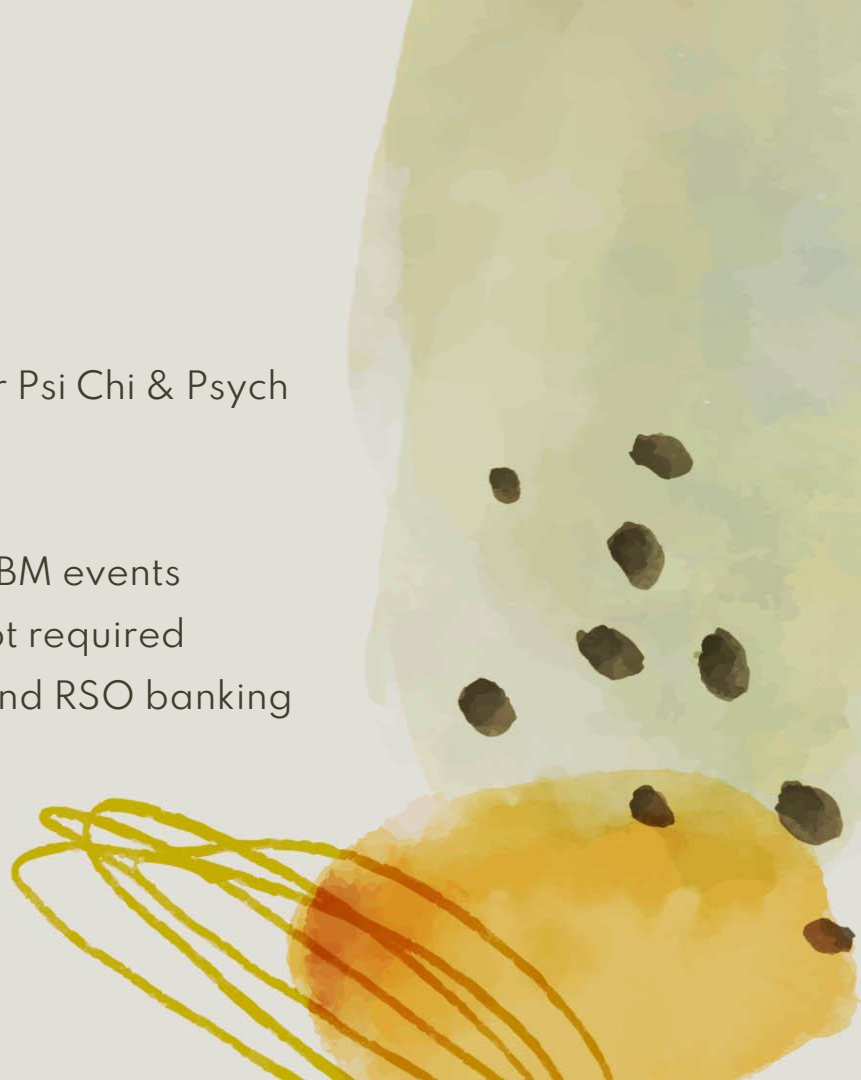
Contact Shirley at **shirleybuchheim516@gmail.com**
with any questions!



Treasurer

- ❑ Oversee all financial affairs & budgeting
- ❑ Track incoming and outgoing expenses
- ❑ Maintain single US Bank business account for Psi Chi & Psych club
- ❑ Must possess & maintain Venmo account
- ❑ Buy and transport all supplies used during GBM events
- ❑ Microsoft Excel knowledge preferred, but not required
- ❑ Attend RSO3 & ILAT trainings (8 hours), attend RSO banking training (1.5 hours)
- ❑ Organize & promote fundraising events

Contact Julie at jkersey8285@sdsu.edu with any questions!



Psychology Club Vice President

- ❑ Assist the Psychology Club president and other officers in tasks as needed
- ❑ Process Psychology Club applications
- ❑ Answer questions and emails about Psychology Club
- ❑ Act as a representative of Psychology Club at all events
- ❑ Create the meeting slides!

Contact Hailey at haileyadney@gmail.com with any questions!



Psychology Club President

- ❑ Act as primary representative of Psychology Club at all events
- ❑ Create the weekly officer agenda with Psi Chi President
 - ❑ Overall, **work hand-in-hand with Psi Chi President** on everything & make decisions together
- ❑ Process Psychology Club applications Fall & Spring semesters
- ❑ Check email & respond to emails frequently
- ❑ Plan the Psychology Recognition Ceremony (PRC) with Dr. Sadler/Dr. Gilbert

Contact Kassidy at ktolbert1432@sdsu.edu with any questions!



Psi Chi Vice President

- ❑ Assist the president and other officers in tasks as needed
- ❑ Process Psi Chi applications
- ❑ Answer questions and emails about Psi Chi
- ❑ Work with the President and Advisor to plan the Psi Chi Initiation Ceremony each Fall semester & speak alongside the president at the Inductions
- ❑ Assist in applying for Psi Chi Awards
- ❑ Act as a representative of Psi Chi at all events

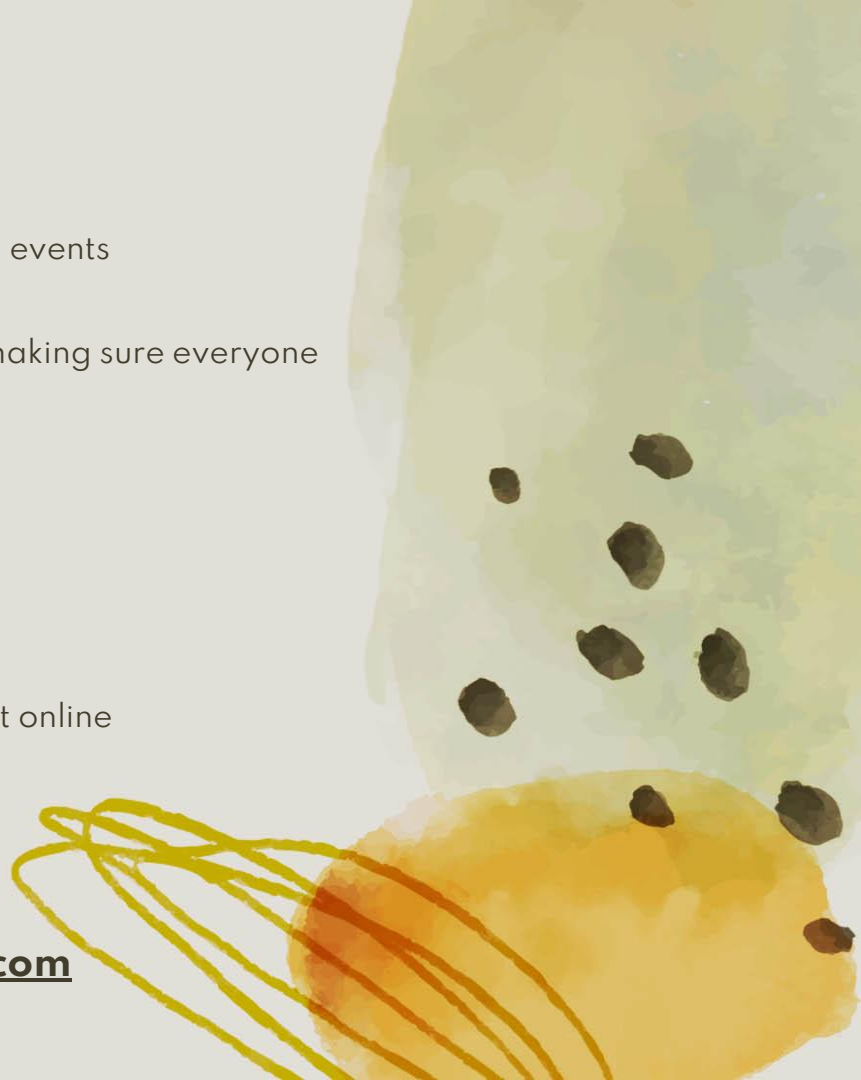
Contact Heather at hmiller9970@sdsu.edu with any questions!



Psi Chi President

- ❑ Serve as the primary representative of Psi Chi at all events
- ❑ Plan GBM outline schedule each semester
- ❑ Assist other officers in tasks as needed, while also making sure everyone is on track
- ❑ Process Psi Chi applications and order certificates
- ❑ Answer questions and emails about Psi Chi
- ❑ Plan Psi Chi Initiation Ceremony every Fall
- ❑ Attend RSO3 & ILAT trainings (8 hours)
- ❑ Set room reservations for the year through A.S.
- ❑ Complete RSO requirements (update bylaws/fill out online applications, etc & submit for eligibility)
- ❑ Run exec meetings with Psych Club President
- ❑ Collab with exec on merch and order it

Contact Nicolette at nicolettemcgaugh@gmail.com with any questions!



QR Code for Election Sign-Ups!





Thank you for Coming!

Next Meeting:
Wednesday, April 12th
Dr. Jaclyn Siegel
Sex Therapy

Any questions, comments, or concerns?
Feel free to email us
psych.sdsu@gmail.com

Credits: This presentation template was created by **Slidesgo**, including icons by **Flaticon** and infographics & images by **Freepik**

